



TECHNICAL DATA SHEET

SK2PP180-1

Peel Ply for premier and secondary structural bonding

► DESCRIPTION

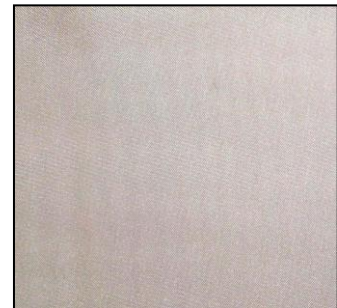
This polyester peel ply is developed special for high performance composite parts, made of phenolic and epoxy resin systems.

This peel ply is used to impart a textured fine surface impression to the molded component to improve adhesion of a composite laminate for priming and secondary structural bonding. Using of peel plies reduce or eliminate the need for sanding or abrading.

This product is used in various manufacturing processes of parts made of composite materials.

► TECHNICAL DATA

Material type:	Polyester
Color:	White
Stripes:	-
Surface weight:	102g/m ²
Maximum use temperature:	180 °C
Weave style:	Plain



► SIZE

Thickness	Width	Length
147µm	1740mm	100m

Shelf life: unlimited

Storage conditions: it is recommended to store at temperature from -20°C until +30° in original packing.

► NOTE

Material is deoiled and heat set – thermic stabilized by heat treated to remove all possible pollutants and reduces shrinkage.

Hot knife slitting of the 1 master is possible upon request. 1 roll is a minimum order quantity.