



TECHNICAL DATA SHEET

SK2VV270-17

Adaptor for vacuum valves

► DESCRIPTION

Adaptors for vacuum valves and quick connectors for autoclave and oven applications. This kind of adaptors are used for changing of the carving type and size.

This product is used in various manufacturing processes of parts made of composite.

► TECHNICAL DATA

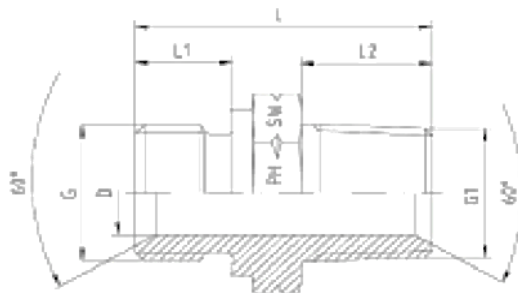
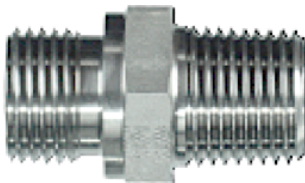
Material type:	Stainless steel
End Fittings:	Male/Male and Male/Female
Maximum use temperature:	270°C

► SIZE

BSP - Parallel – NPT

BSP – Male with 60°-Cone and sealing shoulder form B.

NPT – Male with 60°-Cone.





TECHNICAL DATA SHEET

SK2VV270-17

Adaptor for vacuum valves

PRESSURE	THREAD		APPROX. DIMENSIONS				
	PN	G=BSP	G1=NPT	L	L1	L2	D

Series A

400	1/8"-28	1/8"-27	24,5	8	10,0	4,0	14
400	1/4"-19	1/4"-18	32,5	10	15,0	6,0	19
400	3/8"-19	3/8"-18	38,0	12	15,3	9,0	22
400	1/2"-14	1/2"-14	43,0	14	20,0	12,5	27
400	3/4"-14	3/4"-14	47,0	16	20,0	17,5	32
400	1"-11	1"-11,5	54,5	18	25,0	22,5	41
200	1 1/4"-11	1 1/4"-11,5	66,0	20	25,5	30,0	50
200	1 1/2"-11	1 1/2"-11,5	64,0	22	26,0	37,0	55
100	2"-11	2"-11,5	66,0	25	26,0	45,0	70

Series B

400	1/8"-28	1/4"-18	30,0	8	15,0	4,0	14
400	1/4"-19	1/8"-27	27,5	10	10,0	4,0	19
400	1/4"-19	3/8"-18	33,0	10	15,3	6,0	19
400	1/4"-19	1/2"-14	40,0	10	20,0	6,0	22
400	3/8"-19	1/4"-18	35,5	12	15,0	7,0	22
400	3/8"-19	1/2"-14	42,0	12	20,0	9,0	22
400	3/8"-19	3/4"-14	42,0	12	20,0	9,0	27
400	1/2"-14	1/4"-18	40,0	14	15,0	7,0	27
400	1/2"-14	3/8"-18	40,0	14	15,3	9,0	27
400	1/2"-14	3/4"-14	45,0	14	20,0	12,0	27

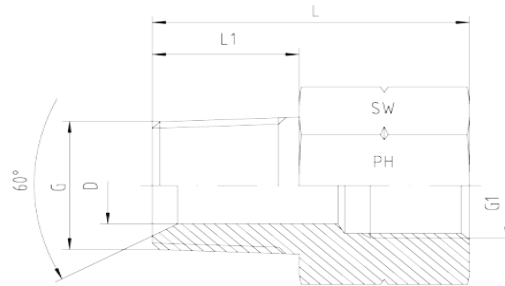
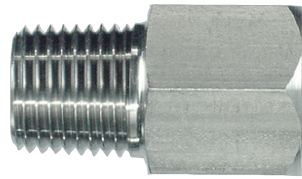
It remains the responsibility of the user to verify that product meet the requirement of the process applied.

400	3/4"-14	1/2"-14	45,0	16	20,0	12,5	32
400	3/4"-14	1"-11,5	52,0	16	25,0	17,5	36
400	1"-11	3/8"-18	45,0	18	15,3	9,0	41
400	1"-11	1/2"-14	50,0	18	20,0	12,5	41
400	1"-11	3/4"-14	50,0	18	20,0	15,0	41

NPT - Male - NPT - Female - Form B

NPT – Male with 60°-Cone

NPT - Female



PRESSURE	THREAD		APPROX. DIMENSIONS				FORM
	PN	G=NPT	G1=NPT	L	L1	D	
630	1/8"-27	1/8"-27	25,0	10,0	4,0	14	B
630	1/8"-27	1/4"-18	31,0	10,0	4,0	19	B
630	1/4"-18	1/8"-27	30,0	15,0	6,0	14	B
630	1/4"-18	1/4"-18	36,0	15,0	6,0	19	B
630	1/4"-18	3/8"-18	37,0	15,0	6,0	24	B
630	1/4"-18	1/2"-14	42,0	15,0	6,0	27	B
630	3/8"-18	1/4"-18	36,0	15,0	9,0	19	B
630	3/8"-18	3/8"-18	37,0	15,0	9,0	24	B
630	3/8"-18	1/2"-14	41,0	15,0	9,0	27	B



TECHNICAL DATA SHEET

SK2VV270-17

Adaptor for vacuum valves

630	1/2"-14	3/8"-18	39,5	20,0	12,0	24	B
630	1/2"-14	1/2"-14	46,0	20,0	12,0	27	B
630	1/2"-14	3/4"-14	48,0	20,0	12,0	36	B
630	3/4"-14	1/2"-14	42,0	20,0	15,0	27	B
630	3/4"-14	3/4"-14	48,0	20,0	18,0	36	B
400	3/4"-14	1"-11,5	50,0	20,0	18,0	36	B
400	1"-11,5	3/4"-14	34,0	25,0	22,6	36	B
400	1"-11,5	1"-11,5	57,0	25,0	21,0	41	B
400	1"-11,5	1 1/4"-11,5	57,0	25,0	21,0	50	B
400	1 1/4"-11,5	1"-11,5	54,0	25,5	28,5	46	B
400	1 1/4"-11,5	1 1/4"-11,5	55,0	25,5	30,0	50	B
400	1 1/4"-11,5	1 1/2"-11,5	62,5	25,5	30,0	55	B
400	1 1/2"-11,5	1 1/4"-11,5	55,0	26,0	36,0	50	B
400	1 1/2"-11,5	1 1/2"-11,5	63,0	26,0	36,0	55	B
315	1 1/2"-11,5	2"-11,5	64,0	26,0	36,0	70	B

Shelf life: not limited

Storage conditions: it is recommended to store at temperatures between -20°C and +30°C in original packing.