



# TECHNICAL DATA SHEET

## SK3VAC-15L Vacuum trap for resin

### ► DESCRIPTION

A big vacuum trap with silicon vacuum tight rim was developed to trap resin excess in the infusion process. The cover of the tank is made of plexiglass which helps to control pail filling in the tank with resin. Fittings construction allows to place the tubes end leads into the tank by putting them into the openings of the clamping fitting and twirling clamping ring. Thus, in case of resin entry into the trap fitting will remain clean. At the end of the process the fixing fitting ring has to be untwisted and the tube is pulled out.

Each tank is equipped with:

- Polypropylene pail for resin trapping aimed at preventing the tank from contamination;
- Vacuum gauge;
- Valve for manual flow control;
- Quick disconnect plug SK2VV232-4 1/4" to connect vacuum to the tank;
- 4 clamping fittings for the tube with external diameter 12mm to connect resin channels. (Fittings for tubes 10mm and 16mm are available on special order).



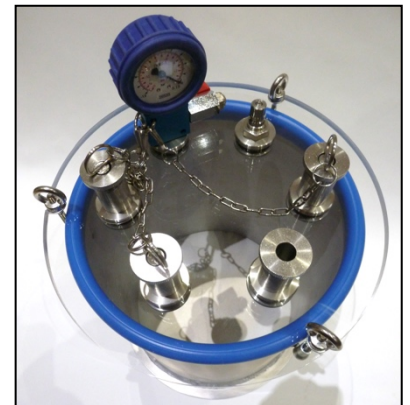
Pic. 1: SK3VAC-15L4WS12x4



Pic. 2: Open connection



Pic. 3: Open cover



Pic. 4: Top view



# TECHNICAL DATA SHEET

## SK3VAC-15L Vacuum trap for resin

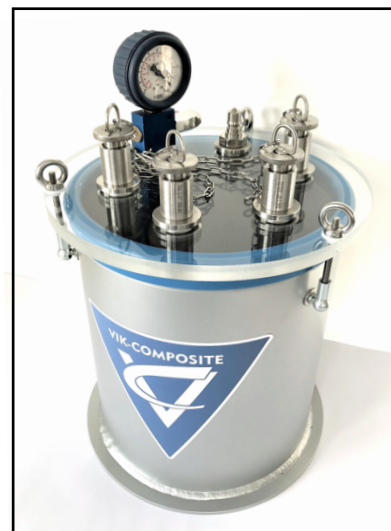
### ► TECHNICAL DATA

Tank volume:	14.7 litres
Tank diameter / total:	26cm/30cm
Total height of the tank:	49 cm
Tank material:	aluminum
Fitting material:	stainless steel
Tube connection:	3 clamping fittings for tube 12mm
Vacuum connection:	quick disconnect plug 1/4"

Reference	Description
SK3VAC-15L0WR12x4	Resin catch reservoir 14,7l, incl. seal system, with round base, 1 manual vacuum flow regulator, 1 vacuum gauge, 1 quick disconnect vacuum outlet ¼ " BSP, 4 push fittings for resin bleed for tube 12mm ID
SK3VAC-15L0WS12x4	Resin catch reservoir 14,7l, incl. seal system, with square base, 1 manual vacuum flow regulator, 1 vacuum gauge, 1 quick disconnect vacuum outlet ¼ " BSP, 4 push fittings for resin bleed for tube 12mm ID
SK3VAC-15L4WS12x4	Resin catch reservoir 14,7l, incl. seal system, with square base and 4 wheels, 1 manual vacuum flow regulator, 1 vacuum gauge, 1 quick disconnect vacuum outlet ¼ " BSP, 4 push fittings for resin bleed for tube 12mm ID



Pic. 5: Top view



Pic. 6: SK3VAC-15L0WR12x4

The product can slightly differ from the photo depending on complete set.