



TECHNICAL DATA SHEET

SK1LP-ProDirectorXS2GN-1H

Compact laser projection system ProDirector XS2,
5mW green

► DESCRIPTION

SL-Laser's computer-controlled projectors are industry proven to be rugged and durable, even when placed in hostile climates. Exacting quality control standards ensure the SL projector keeps projecting your profits, even on high-precision ultra accurate 3D production forms & molds, ensuring efficient production.

SL-Laser customizes each installation for your particular needs and production process. This allows elimination of errors, waste is reduced, parts are consistently accurate and quality is assured.

With thousands of projectors successfully installed worldwide in various industries, SL-Laser systems have even become standard equipment included by some of the world's finest original equipment manufacturers (OEM's).

SL-Laser is a proven supplier of the European aerospace industry, along with race cars, speedboats and other high-tech market sectors. Exacting representation of 3D outlines in the production area of composite work pieces also opens limitless boundaries.

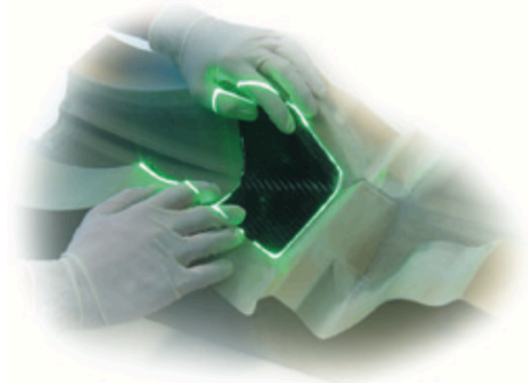
► PRODUCT OVERVIEW

The smaller **LASER PROJECTOR ProDirector XS2** is perfect for applications in tighter, confined spaces. Mounting of the projector is flexible - from simple tripod or cart systems



where mobility is required for custom solutions such as mounting in helicopter cockpits to assist in layout of complex cable and wiring connections. High tech production needs high tech solutions. The ProDirector XS2 is a compact system. This system can also be installed as a fix system. However, this system has its advantage in mobility. Due to its low weight, this laser can be positioned anywhere where there is a lack of space. Either place the ProDirector XS2 on a tripod or mount it in

different positions with the optional clamping systems. This system is interesting for confined spaces, as well as for changing mounting positions. This is the case, for example, in aircraft fuselages, in ship buildings, wagons for trains or for the installation of cable routes and brackets.



3D laser projection facilitates the positioning of preregs



TECHNICAL DATA SHEET

SK1LP-ProDirectorXS2GN-1H

**Compact laser projection system ProDirector XS2,
5mW green**

For both laser systems, the projection can be made from any direction. The projection takes place mm-exactly by the data from the CAD on the different surfaces. The projectors can also be offered on a rail system or as a mobile trolley system. For each application, the laser systems are adapted so that the best solution is offered to the customer.

The **Laser Projector** generates its image from common CAD design and construction drawings. The laser projector emits the desired outlines precisely into the production tooling or surface. The sequence of the images for the necessary steps of work procedure can be controlled and retrieved via a remote unit.

The **laser projection** color of the laser is red or green. A single laser dot is moved at a high rate of speed in both X and Y directions - moving so fast that a standing image is perceived by the human eye. The equipment can project at an infinitely variable angle from any direction, allowing the laser projector to be flexibly retrofit into an existing production process without positioning restrictions.

► TYPICAL APPLICATIONS of ProDirector XS2

- Composites
- Aerospace/Boatbuilding
- Prefabricated Components

► ProDirector XS2 SYSTEM SPECIFICATIONS:

Position Accuracy	± 0.014“(0.35mm) at a distance of 15’over 17’x 17’ (4.5m x 4.5m) area (equals to a 60° projection)
Field of View (FOV)	
Horizontal:	max. 80° (60° recommended)
Vertical:	max. 70° (60° recommended)
Laser:	5 mW maximum power, 0.9 mW “eye safe”-mode
Red:	625 - 640 nm laser diode,
Green:	532 nm diode-pumped solid state laser
Laser Class North America:	Class IIIa per 21CFR 1040 (CDRH)
International:	Class 2M per IEC/EN 60825-1:2007, CE certification
Power Requirement	80-240 VAC 50/60 Hz
Dimensions	
Length:	336 mm/13.2 “
Width:	117 mm/4.6 “
Height:	180 mm/7.0 “
Weight:	6.5 kg /14.33 lbs




TECHNICAL DATA SHEET

SK1LP-ProDirectorXS2GN-1H

Compact laser projection system ProDirector XS2,
5mW green

The following accessories are included in the system:

Description	Image
ProDirector XS2 V2 USB power supply Incl. Converter and cable (length 10m)	

► SYSTEM UPGRADE

It is possible to upgrade the existing ProDirector XS2 into **ProDirector XS2+ Laser projection system**. Realization of this option needs to send your existing ProDirector XS2 heads to Germany.

The advantages of the updated Laser projection system:

- Much less flickering, the picture is stabilized with incredible speed
- **The ProDirector XS2+** with a new operating system makes work much easier
- Latest driver technology makes the laser projection system much faster and more accurate
- Moving of the laser images much more fluent and less flickering regarding other systems. Much more images projected at once without flickering

The points on the reference image (rectangle picture 3000mm to 1000mm at a vertical distance of 3000mm) were generated by a new laser at a rate of 75 Hz. The predecessor model of the laser produces the same image only at 38 Hz. Thus, the new Laser ProDirector XS2+ produces the image almost 50% faster * than the previous model.

*Attention! This statement only refers to the reference image under the same projection conditions!
Depending on the application, data, working environment and customer requirements, the speed could vary.

► ProDirector XS2 HARDWARE:

- Temperature stabilized (peltier-cooled) 5mW solid state laser, projection colour green
- Precision-high speed scanner with push-pull amplifiers
- Electronics in modern SMD technology
- **Integrated embedded PC** with 400 MHz and 64 MB-memory **SK1LP-PC-STD**
- Optimized receiving sensor of the reflection radiation



TECHNICAL DATA SHEET

SK1LP-ProDirectorXS2GN-1H

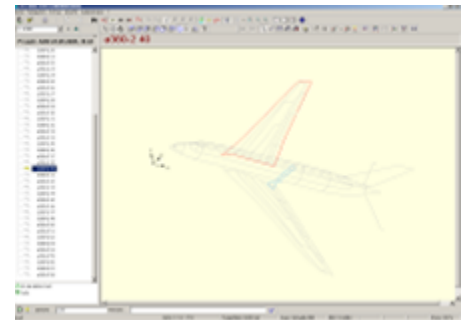
Compact laser projection system ProDirector XS2,
5mW green

- Input signal USB
- Control indicators for reflection signal
- System filter in the current feed
- Over voltage protection at the supply entry
- Switch power supply unit with an input voltage of 80-240 VAC
- Industrial aluminium housing according to IP 54 with optimized surface for heat emission
- Environmental temperature 5-45 degrees Celsius
- CE-conformity-marking, Laser class 2M
- Manual and CD-ROM

► SL3D SL-SOFTWARE - SK1LP-SOFT-SL-3D

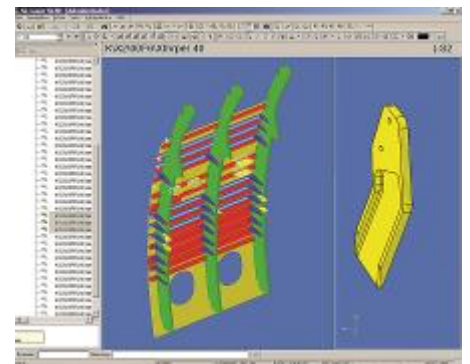
Short Description:

- Electronic ply book (Time stamp, ply name, Operator)
- Modify Ply data (Hide or Delete lines, reduce points)
- Data input (From CAD Systems such as CATIA, ProE)
- Import Formats: IGES, STEP, DXF, APT, PLY, SL, GSI, XML
- Automated tools (Automatic selection of the ideal projector)
- Security and Process Security (Password protected, workflow protected, online guides, enforced brakes)
- Multi mould calibration (working on independent moulds)
- Special options (spring back): de-moulding after autoclave cycle there is a spring back and a deviation between model and de-moulded part)



Extra online-guides for production as text or graphical information that is displayed on the screen with the corresponding ply. E.g. a drawing or photo how to do perform this step.

The information is shown by the programmers button click or automatically when the ply is selected.
Enforced “brakes” that guarantee a minimum timing for certain steps. E.g. after applying the vacuum bagging a countdown starts for five minutes to ensure the required time for compacting.





TECHNICAL DATA SHEET

SK1LP-ProDirectorXS2GN-1H

Compact laser projection system ProDirector XS2,
5mW green

ProDirector XS2 ASSEMBLY SOFTWARE

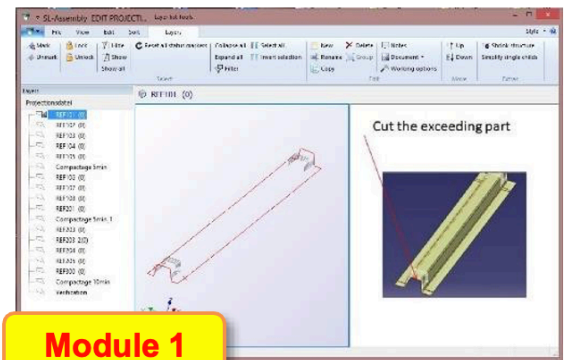
The SL assembly software, designed for users who want to create a quick and easy way of projection files.

The software has **3 MODULES**. Each Module has one license.

Module 1 - SK1LP-SOFT-SL-ASS-M1

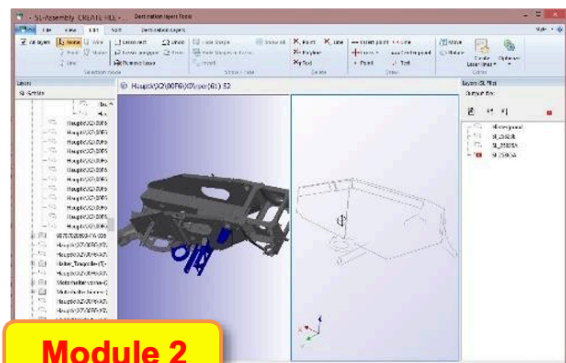
Module 1 is included in the delivery of one bought ProDirector.

- Used for preparation and optimization of the projection files.
- Calibration files created and laser parameters generated.
- Projection files can be used separately without any further intervention in the production process.



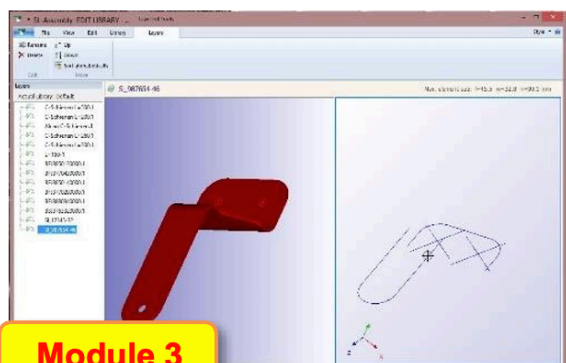
Module 2 - SK1LP-SOFT-SL-ASS-M2

- - It is used to create 3D projection data from original files.
- Own projection sequences are created.
- For each sequence, you can add the lines of a 3D file in the projection file with various tools of the assembly software
- The dual display simplifies the processing



Module 3 - SK1LP-SOFT-SL-ASS-M3

When a component contains multiple elements (e.g. clips, mounting parts ...), a library can be generated. The software scans the complete component after Elements and creates through the Library the projection file.





TECHNICAL DATA SHEET

SK1LP-ProDirectorXS2GN-1H

Compact laser projection system ProDirector XS2,
5mW green


ADVANTAGES OF SL3D SOFTWARE

- simple use
- data generated quickly
- no special CAD Software for data creation required
- no specific knowledge in CAD required
- good cost performance

► ProDirector XS2 ACCESSORIES

Remote controls (ordered separately)

The remote controls consist of a hand transmitter and a receiver section on the projector or on the PC. They are very shock resistant and therefore suitable for industrial use. The hand transmitters have buttons for freely selectable functions. These button functions can be programmed individually via the SL software. We can offer you 4 variants of remote controls.




Reference	Description	Image
SK1LP-BRC	<p>Bracelet Remote Control which the user always has with him and can confirm the laid parts for example. The operator saves himself time and does not need to go to the PC to confirm the situation or to have the other remote controls in his pocket.</p> <ul style="list-style-type: none"> • Range approx. 50m • Programmable action buttons • USB port • Operating frequency 868,95 Mhz • Operating temperature 0° C to 50°C • Storage temperature -10° C to +60°C 	
SK1LP-8BRC	<p>8-Button remote control with Joystick (Set) and a larger display. The joystick is often used to approach the calibration points or targets or to move the laser image.</p> <ul style="list-style-type: none"> • Transmission range 30m (Open field about 300 m) • Programmable action buttons • Direction keys for axis movement 	



TECHNICAL DATA SHEET

SK1LP-ProDirectorXS2GN-1H

Compact laser projection system ProDirector XS2,
5mW green

	<ul style="list-style-type: none"> • With the 8 button remote control all important functions can be triggered <ol style="list-style-type: none"> 1. Laser calibration 2. Next Pen (Layer) represent number (image change – for example, contour) 3. Previous Pen (Layer) represent number (image change – for example, next ply) 4. Visual display of all the calibration target points 5. Confirmation of the position, then switch to the next ply 	
<p>SK1LP-8BRC-JL</p>	<p>8-Button remote control JL (Set) with a display on which the layer name can be displayed.</p> <ul style="list-style-type: none"> • Transmission range 30m (Open field about 300 m) • Programmable action buttons • Direction keys for axis movement • With the 8 button remote control all important functions can be triggered <ol style="list-style-type: none"> 1. Laser calibration 2. Next Pen (Layer) represent number (image change – for example, contour) 3. Previous Pen (Layer) represent number (image change – for example, next ply) 4. Visual display of all the calibration target points 5. Confirmation of the position, then switch to the next ply 	
<p>SK1LP-TRC</p>	<p>Tablett Remote control of head</p> <p>By choosing this option Internet Server license for Tablet remote SK1LP-LIC-TRC is needed.</p>	



TECHNICAL DATA SHEET

SK1LP-ProDirectorXS2GN-1H

Compact laser projection system ProDirector XS2,
5mW green

Targets / calibration points

We can offer a large number of target points for different applications. These calibration points can be made in various modifications. The points are 0°, 45°, 90° and as universal targets with 180°.

For 2D applications, we use calibration points that are attached directly or indirectly to the application. For every area, timber industries, concrete, steel, we have different calibration points.

Reference	Description	Image
SK1LP-FT-600 SK1LP-FT-635	<p>Flat Targets 0°, Ø 6.0 mm Flat Targets 0°, Ø 6.3 mm</p> <ul style="list-style-type: none"> • Ultra-accurate • Durable • Reliable • Easy to maintain 	
SK1LP-AT-600 SK1LP-AT-635	<p>Angled Targets 45°, Ø 6.0 mm Angled Targets 45°, Ø 6.3 mm</p> <ul style="list-style-type: none"> • Ultra-accurate. • Durable. • Reliable. • Easy to maintain 	
SK1LP-AT-600 SK1LP-AT-635	<p>Target rotating, Ø 6.0 mm Target rotating, Ø 6.3 mm</p> <ul style="list-style-type: none"> • Ultra-accurate. • Durable. • Reliable. • Easy to maintain <p>Targets are manufactured from stainless steel and we can also offer custom targets manufactured according to your specifications.</p>	



TECHNICAL DATA SHEET

SK1LP-ProDirectorXS2GN-1H

Compact laser projection system ProDirector XS2,
5mW green

<p>SK1LP-FTP-600 SK1LP-FTP-635</p>	<p>Targets with Prism 0° Ø 6.0 mm Targets with Prism 0° Ø 6.3 mm</p> <p>Function: for laser calibration Material: 1.4301 Reflector: prismatic mirror</p>	
<p>SK1LP-ATP-600 SK1LP-ATP-635</p>	<p>Targets with Prism 45° Ø 6.0 mm Targets with Prism 45° Ø 6.3 mm</p> <p>Function: for laser calibration Material: 1.4301 Reflector: prismatic mirror</p>	
<p>SK1LP-SLT-U-600 SK1LP-SLT-U-635</p>	<p>Targets SLT-U-0°-180° and 360° - d = Ø 6,0 mm, Offset: 12mm Targets SLT-U-0°-180° and 360° - d = Ø 6,3 mm, Offset: 12.75mm</p> <p>Function: for laser calibration Material: 1.4301 Reflector: prismatic mirror</p>	
<p>SK1LP-TRK</p>	<p>Targets Repair Kit</p> <p>1 screwdriver 1 tweezers 10 reflector dot High Grade 10 black ring 3 mm</p>	



TECHNICAL DATA SHEET

SK1LP-ProDirectorXS2GN-1H

Compact laser projection system ProDirector XS2,
5mW green

▶ OPTIONAL

▶ MOBILE WORKSTATION SK1LP-MOB-ST

This workstation allows you to bring the laser to the component. The Workstation consists of the laser, which is adjustable in different heights and a PC. After end of production, you can move the mobile workstation to a location where the station can stay without disturbing and waiting for the next mission. The mobile workstation is available in different variants and also with battery operation.



Aluminum chassis with features as follows:

- Frame with cabinet for PC, tools etc. and countertop for keyboard, screen or laptop
- Electrical telescopic post with mounting bracket for laser (motor: 230V / 50 Hz)
- Easy height adjustment with 2 push buttons for up and down movement
- Projection height: 1800mm – 3500mm (other dimensions on request)
- 4 wheels with brakes
- 4 stabilizer

▶ Accu Mobility for ProDirector XS2 SK1LP-ACCU-XS2



- 24 Volt
- 15 Ah

▶ Batterie charger for ProDirector XS2 SK1LP-CHARG-XS2

- Batterie charger
- 24 V / 3 A





TECHNICAL DATA SHEET

SK1LP-ProDirectorXS2GN-1H

Compact laser projection system ProDirector XS2,
5mW green

► Trolley for ProDirector XS2 SK1LP-TROLL-XS2

The ProDirector XS2 can be taken with you on trips. For this purpose, SL Laser has developed a suitcase where the laser PROJECTOR, the cables and the converter can be stowed during the transport. This case is also ideal as a storage box. It protects the laser PROJECTOR when it is not in use. The suitcase has also a space for a battery if you want to use the projection laser independently of the power supply.



- with wheels
- body made of plastic
- foam protection inside



Optionally you can order system with:

- PC (SK1LP-PC-STD)
- Notebook (SK1LP-PC-NOTE)
- Portable PC (SK1LP-PC-PORT)

Chosen solution will be supplied with installed Software in chosen language.

► Portable PC ref. SK1LP-PC-PORT

Performance of Hardware :

- CPU: Intel Core i5-3610ME 3.3GHz
- Dual Core CPU with Hyper Threading
- Hard disk: SSD 2.5" SATA INTEL120 GB
- RAM: DDR3 4.00 GB
- Keyboard: Standard with NUM Lock various languages
- Monitor: Industrial Touch Monitor "19"
- USP
- Power Supply: 100-240 VAC 50/60Hz



SK1LP-ProDirectorXS2GN-1H

Compact laser projection system ProDirector XS2,
5mW green

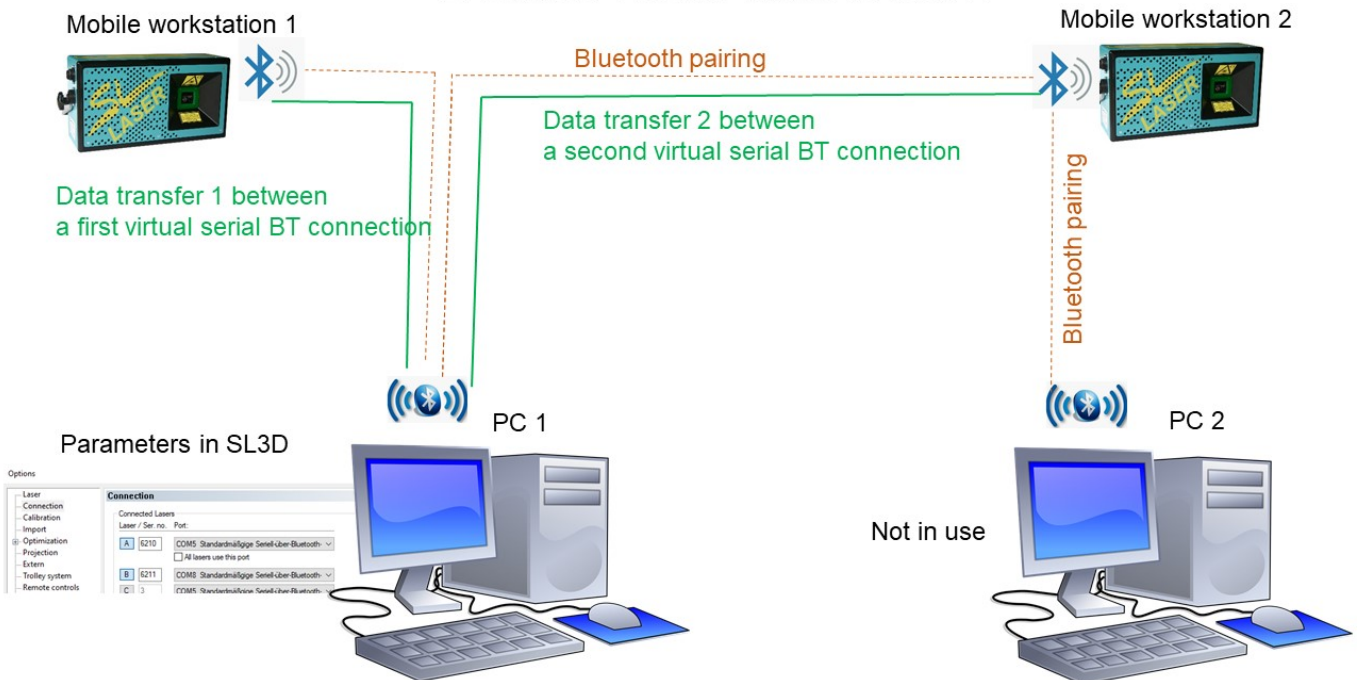
► **System of Uninterruptible power supply SK1LP-UPS USV**

- UPS for PC APC Back-UPS
- 650VA

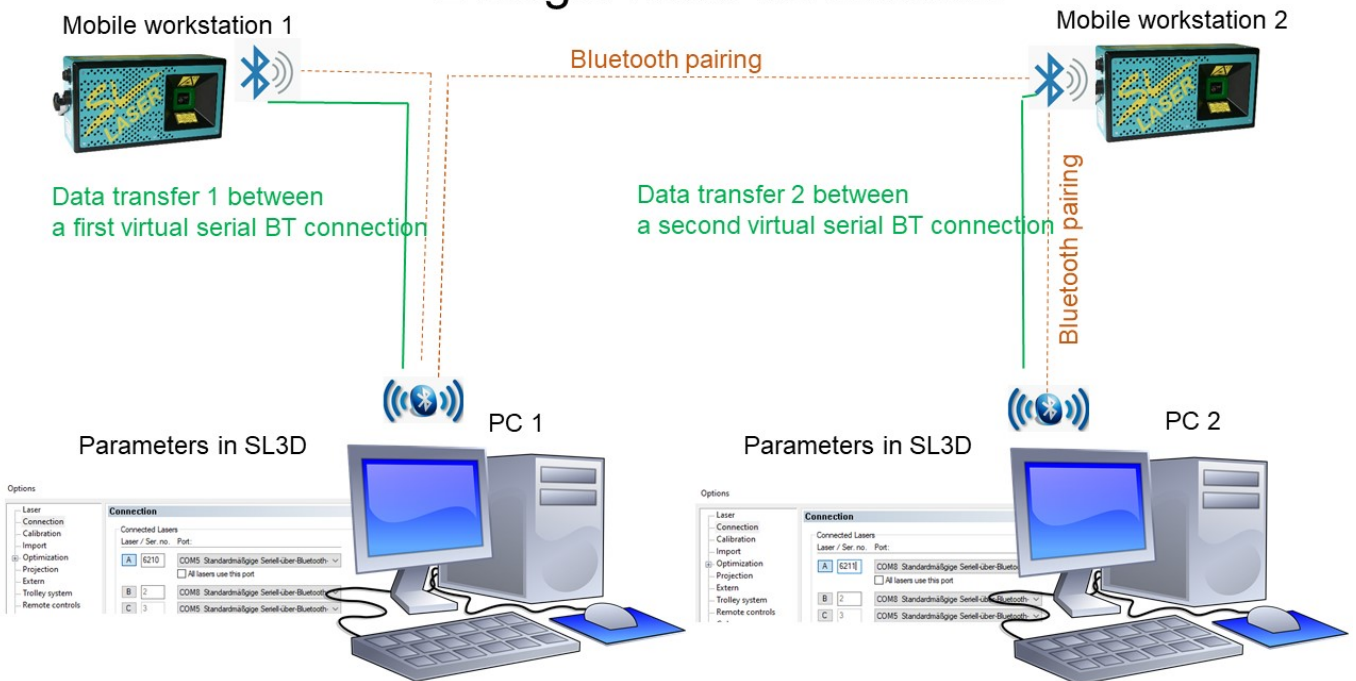
► **SK1LP-BLU Bluetooth system**

Bluetooth system includes device and adaptation on PC/Notebook and on Laserhead.

Double head connection



2 single head connection



► Laser Certification Tool

The Certification Tool has two special tasks. Due to the very precise, milled contours in the plate, you have the opportunity to document the accuracy of the laser beam.

Second, this tool is used to qualify the PROJECTORS so that the components can be manufactured using the qualified laser systems, especially for BOEING components.

The tools M and L can be tilted at different angles so that you can perform the test with the laser from different positions between the tool and the laser.



- Complete with targets
- CD-Rom with target file and projecting files
- Storage container



TECHNICAL DATA SHEET

SK1LP-ProDirectorXS2GN-1H

Compact laser projection system ProDirector XS2,
5mW green

The certification tool can be ordered in 3 sizes:

- **Laser certification tool, large SK1LP-TOOL-L**
(Dimensions: length 1.75m x width 0.50m x height 1.30m)
- **Laser certification tool, medium SK1LP-TOOL-M**
(Dimensions: length 1.19m x width 0.50m x height 1.30m)
- **Laser certification tool, small SK1LP-TOOL-S**
(Dimensions: length 0.60m x width 0.60m x height 43mm)

▶ Converter box mono / dual heads SK1LP-MONO-DUAL



- Housing with switch, for converting a two-headed system to single-head systems
- Connection cables

▶ Fiber orientation (angle) control system SK1LP-LIC-FOC+DEV

This system consists of 3 products:

- A tool for controlling the fiber direction
- Library with the pictures from the different used composites materials
- Software interface for SL3D (special license)



Scan tool



The device should be located
face to the line!!

The operator put the control tool along the laser line.
The system detects the real direction and calculate the angle.
If the tolerance, set upped by the customer, is acceptable, SL3D confirm the layup sequence.

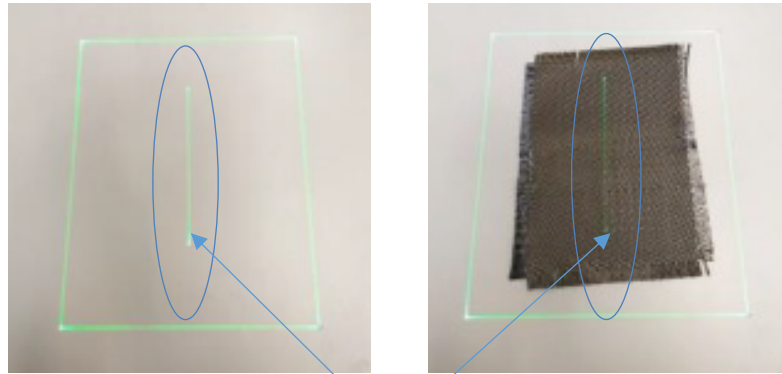


TECHNICAL DATA SHEET

SK1LP-ProDirectorXS2GN-1H

Compact laser projection system ProDirector XS2,
5mW green

For handling the device it's necessary to create the line in the layout drawings, that corresponds the fiber direction.

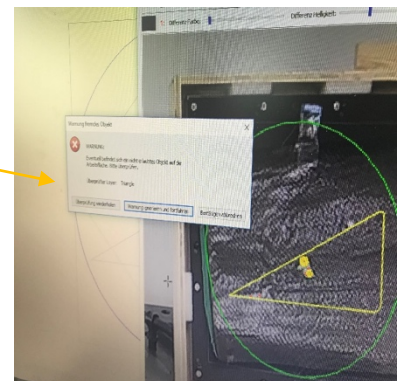
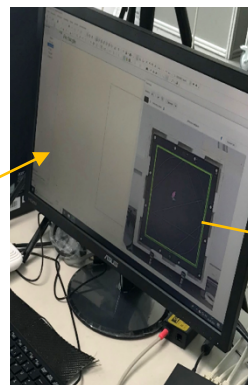


Laser line and fiber

This line can be inserted into the ply for projection or made as a separate layer
For the device this line is 0 degrees

► SK1LP-LIC-DFO Detection system of foreign object

- Software interface for SL3D (special license)
- **A camera system 5Mp with a wide-angle objective for optical control system SK1LP-CAM** The number of cameras depends of the geometry and the size from the tool where the laser or multiple lasers project). Each laser head should be equipped with a camera.
- After the operator had confirm a layer, the camera system control if the system found a foreign object on the projection surface before project the next step. If yes, the laser project the position from the object and the software SL3D need a second confirmation to continue





TECHNICAL DATA SHEET

SK1LP-ProDirectorXS2GN-1H

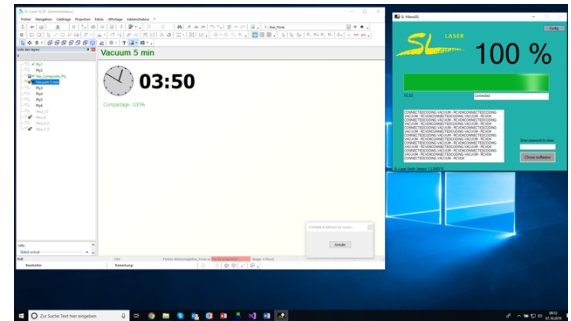
Compact laser projection system ProDirector XS2,
5mW green

► Vacuum control test system

This is a special protocol for external control of vacuum test consisting of:

- Software interface for SL3D (special license)
- One vacuum device (manometer) per tool is supported in the SL3D. The ID is set with the dialog "Setup Vacuum ..."
- After programmed layer system is automatically inform operator about next step to be done: vacuum bagging.
- The default value indicates in % give the minimum value where the vacuum countdown is started. So, that operator cannot manipulate value / make bad vacuum bag / forget vacuum test
- SL3D displays the current status of the vacuuming in%: As long as the vacuum value is not reached, the countdown will not start and the display of the value will be light gray.
- When the minimum value is reached, the countdown starts and the display turns green.
- To do this, the device must constantly send the current value with VACUUM <value>

PC with SL3D and SL-Mano Software



USB for connect to PC



Manometer

240 V

The vacuum control system is available in 2 options:

- **Vacuum control test system with cable connection for data transfer SK1LP-VAC-VAL-CAB**
- **Vacuum control test system with wireless connection for data transfer SK1LP-VAC-VAL-WLESS**



TECHNICAL DATA SHEET

SK1LP-ProDirectorXS2GN-1H

Compact laser projection system ProDirector XS2,
5mW green

▶ System SK1LP-LIC-BOUNDCONR - Interface for boundary control

- This system includes special software interface for SL3D (special license)
- For the using of option, you need a camera system 5Mp with a wide-angle objective for optical control system SK1LP-CAM. The number of cameras depends of the geometry and the size from the tool where the laser or multiple lasers project. Each laser head should be equipped with a camera.

The software and mounted optical camera(s) check boundaries of layers, comparing them to the set model with software. We want to pay your attention that check of boundaries by laying, is effective only when laying layers are in contrast colors. By placement "black on black", even the most sensitive camera should be located at least at distance 0.5-1.0m from the checked surface, which is not our case in serial production and also lighting in work shop has to be very bright. Also, a question to the acceptable tolerance of a deviation: means that deviation from laser projected line and position of layer will be quite big that cameras could "see" them at placement of layer.

▶ TRAINING

3 days training at the Customer's place including:

- Training for the operators on the laser system and SL3D software
- Training for the administrators on the laser system and SL3D software (extended)
- Training for the CAD department, creating Target and laser files (ply files)
- The training includes the explanation of the software and hardware and how it is working
- The training includes that on the second day the operators will work under supervision

▶ NOTE

Please contact us for more detailed information as well as for system development according to your technical specification.