



# TECHNICAL DATA SHEET

## SK3INS1200-1

### Non-woven thin insulation material

#### ► DESCRIPTION

SK3INS1200-1 is a non-woven thin insulation material which has an excellent continuous temperature resistance of 1200°C due to its formula. It is characterized by very good chemical resistance, excellent physical properties and a high mechanical load capacity.

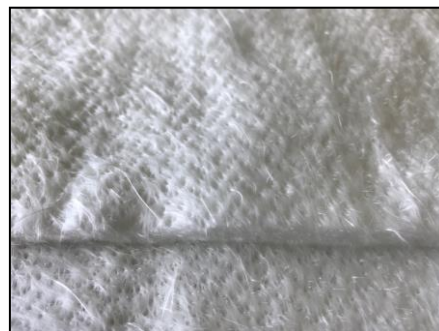
The product is non-flammable, has excellent insulation properties and good vibration stability.

This product is used high temperature insulation.

SK3INS1200-1 is made from continuous filaments with a diameter of  $\geq 6 \mu\text{m}$  and are therefore far above the critical fibre range of  $3 \mu\text{m}$ . This means that it is harmless to health.

#### ► TECHNICAL DATA

Raw material:	Silica glass fibres
Weight:	900g/m <sup>2</sup>
Color:	White
Melting point:	$\geq 1600^{\circ}\text{C}$
Max. Use temperature °C:	Continuous 1200°C (Short-time 1500°C)



#### ► SIZE

Width	Thickness
1000mm	6mm

Shelf life: not limited.

#### ► NOTE

Other widths are available on special order.