



TECHNICAL DATA SHEET

SK1INJ1K-COMPACT

Compact one-component injection unit

► DESCRIPTION

SK1INJ1K-COMPACT – is a simple and high quality injection machine with a reasonable price for low budgets which can be used for infusion or RTM processes with low pressure.

This type of machine has no full automation however having data logging makes it an ideal solution for laboratories or companies with low budgets. It has a basic software and a recording system.

SK1INJ1K-COMPACT unit is operating mono components resin (RTM 6 or equivalent) which can be degassed inside and heated. The resin can be injected by vacuum (during the infusion) as well as by pressure max 1 bar (Option: upgrade to 6 bar for RTM is available). The system with 9.5 inch PLC display is mounted on a scale to control the weight of the injected resin. The unit is very simple-to-operate. The resin is filled directly in the tank for operation and the tank requires to be cleaned after each injection. For smaller quantities (10 L to 12 L resin in 15 L pails), the resin can be placed in a pail inside the tank system.

Description of the standard machine for infusion / RTM 1 bar maximum

- Unit injection / infusion 1 bar capacity, with CE certificate
- Injection tank / stainless steel with elements :
 - Stirring system / electric/ variable speed.
 - One probe installed on the cover is plunged in the resin. On customer's choice a probe with thermocouples type J or K. **(Option: 2 probes)**
 - Relief valve
 - Manometer and pressure manifold 0/1 bar
 - Manual valves for pressure / vacuum
 - Tank is closed by circular metallic belt
 - Pressure operation : -1 bar / + 1 bar **(Option: -1 bar / + 6 bar)**
 - Heating system by belt around the tank to heat resin inside to 50°C max
 - Pneumatic cover lift with manifold
 - Resin outlet with manual valve. **(Option: with pneumatic pinch valve for soft tube)**
 - Injection line is not heated **(Option: heated line for tube with external diameter 13mm)**
- Scale for weight measurement (20 g accuracy)
- Vacuum pump 10 m³/hour with vacuum gauge and manual manifold to place vacuum on the tank or on the mould
- Control box with interface for control: in French, English or Russian languages. The tactile display is a 9.7 inches. The main functions are heating / start / stop degassing / pressure is applied manually / vacuum is applied manually / screen with curves /



TECHNICAL DATA SHEET

SK1INJ1K-COMPACT

Compact one-component injection unit

part reference to be recorded / password to protect the production parameters.
Saving by USB key on control box side.

- Voltage 230 V - 16 AMP
- Packing included
- Notice included

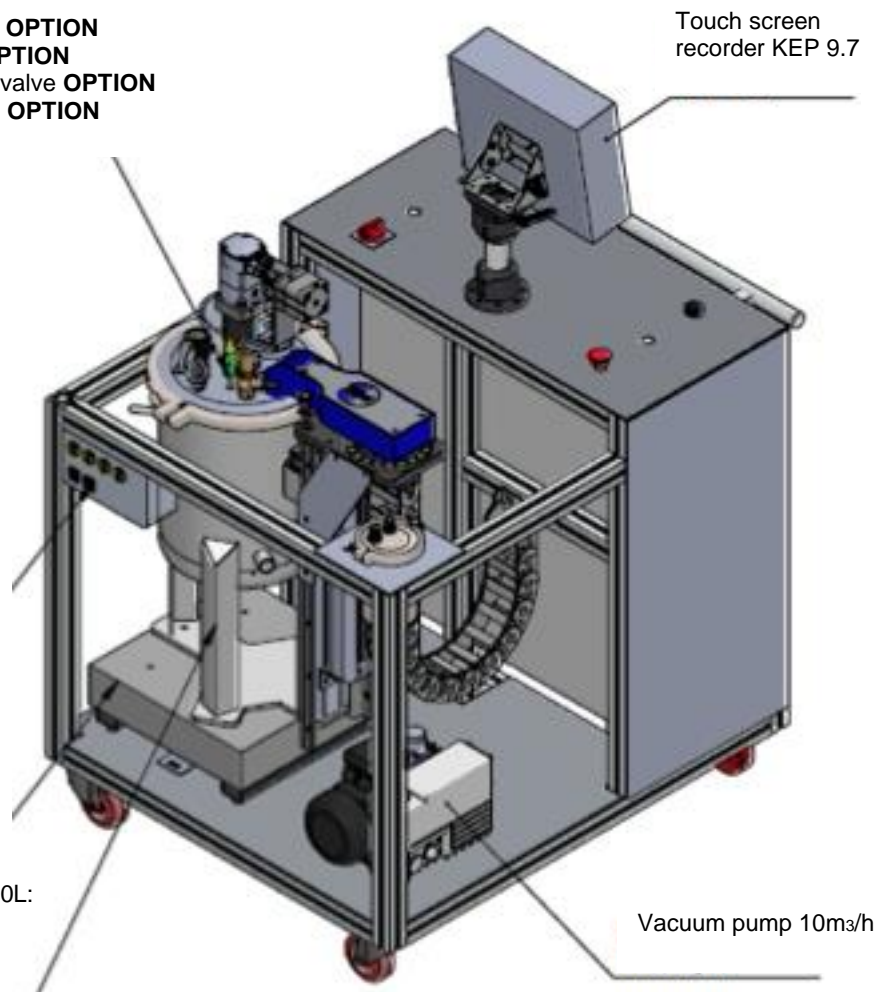
Injection tank 1 K low pressure -1 bar / + 1 bar or option - 1 bar / + 6 bar

- The lid of the tank (approx. 18 kg)
- electric stirring device
 - 2 x temperature probes **OPTION**
 - pressure sensor
 - safety valve
 - exothermic valve **OPTION**
 - window + light **OPTION**
 - pneumatic pinch valve **OPTION**
 - heating resin line **OPTION**

TC sockets and pressure
for external connections
OPTION

Tank for nonreusable pail 10L:
- pressure -1/ +1 bar
- temperature 100°C max
- diffuser

- pneumatic lid raising **OPTION**





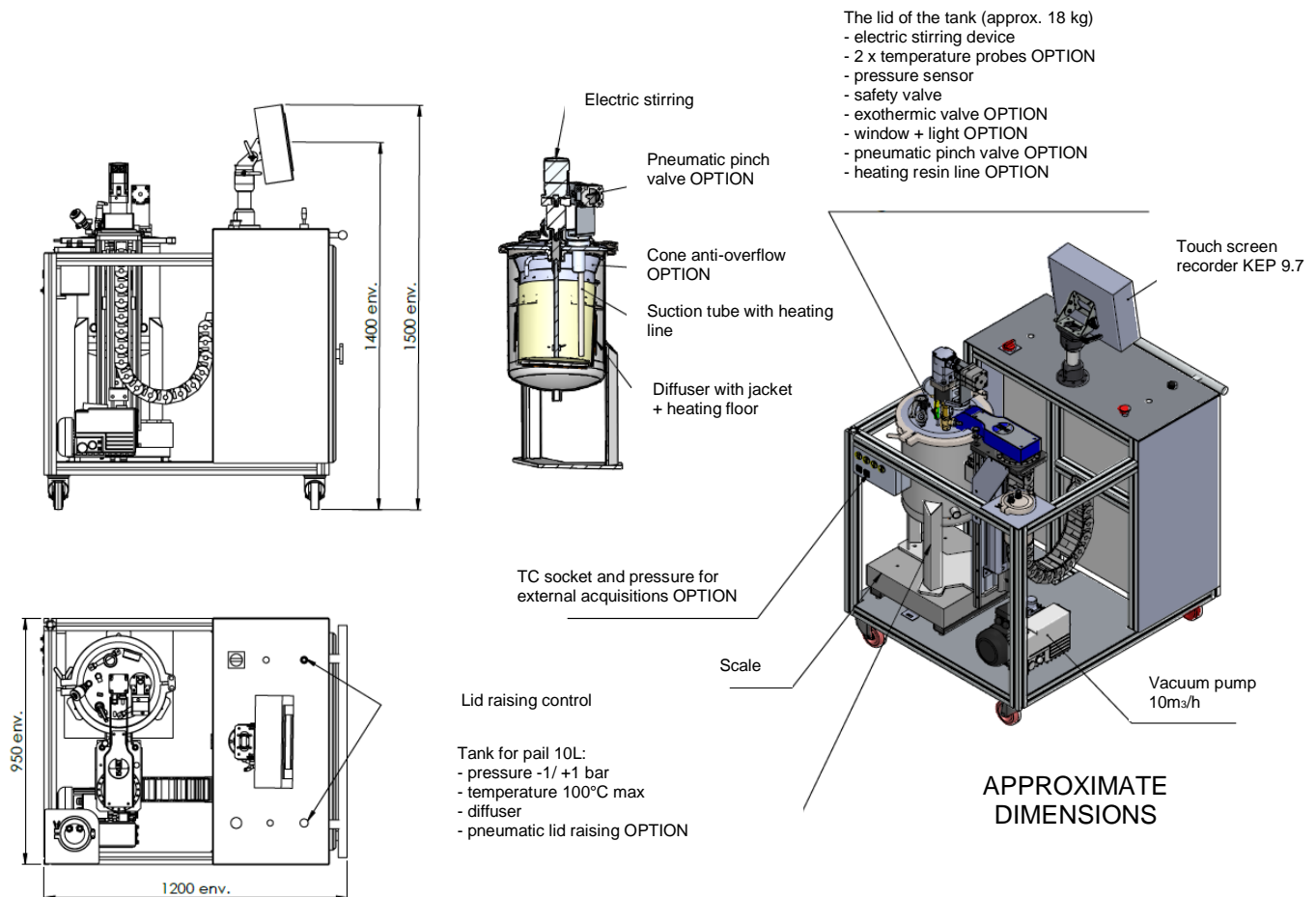
TECHNICAL DATA SHEET

SK1INJ1K-COMPACT

Compact one-component injection unit

► OPTIONS

- Option 1 = Pneumatic pinch valve
- Option 2 = Exothermic valve
- Option 3 = Heated line, length 2m for resin supply for the tube 13mm
- Option 4 = Second probe installed on the cover is plunged in the resin
- Option 5 = 2 TC sockets type K or J for connection to the mould (and for external data logging) + 2 sockets for pressure sensors
- Option 6 = Pneumatic pinch valve
- Option 7 = Cone anti-overflow
- Option 8 = Pneumatic lid raising
- Option 9 = Window + light on the cover of the tank
- Option 10 = Unit implement for working range -1 bar / + 6 bar



Nota = direct filling for 20 l resin operation. The resin is heated directly on external walls of the injection tank.



TECHNICAL DATA SHEET

SK1INJ1K-COMPACT

Compact one-component injection unit

Welcome

Production

Piece number :
1
Piece reference :
QQQQQQ

Stirring speed 1

Resin temperature 22.3 °C

Tank temperature 22.2 °C

Temperature bottom of the tank 21.9 °C

Vacuum 469.4 mbar

Weight 0.016 Kg

Weight of injected resin -0.018 Kg

RAZ injected weight

Calibration

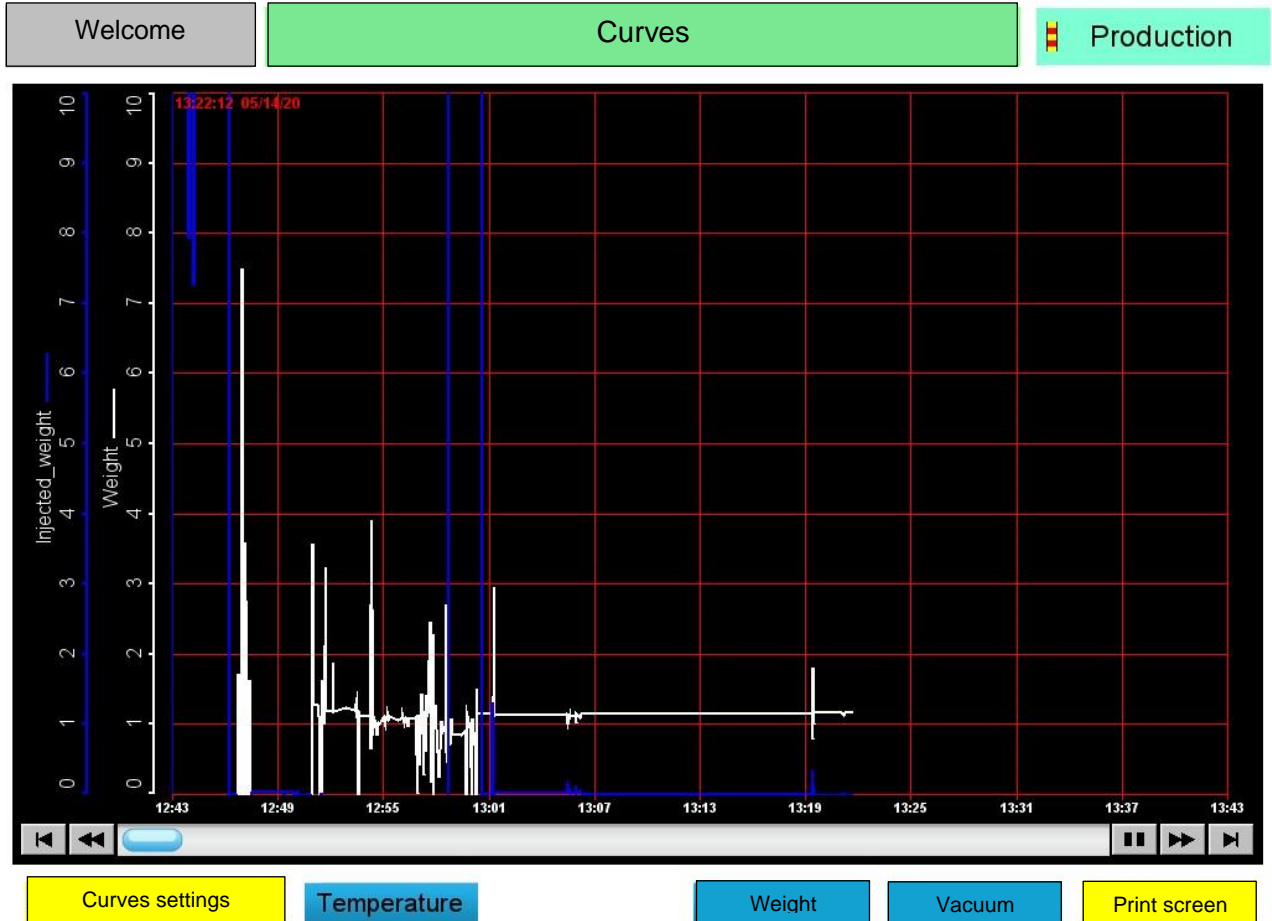
Curves

Command



TECHNICAL DATA SHEET

SK1INJ1K-COMPACT Compact one-component injection unit





TECHNICAL DATA SHEET

SK1INJ1K-COMPACT

Compact one-component injection unit



► NOTE

Please, contact us for more detailed information as well as for system development according to your technical specification.

Standard warranty period: 12 months.