

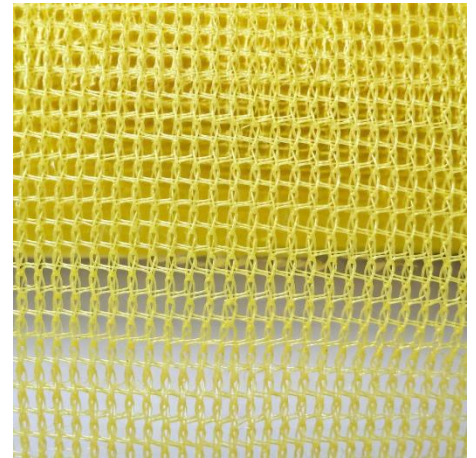


SK2RIM115-1

High drapable knitted resin distribution mesh

Knitted resin distribution media for assist resin flow through the part during the vacuum assisted resin infusion process by room temperature and low temperature processes till 115°C. It works well with polyester, vinylester and epoxy resins. The product is highly drapable. SK2RIM115-1 is available with green tracer threads that indicate the roll direction of the mesh. It can also be used as a reusable fl-exible / high stretch breather for vacuum bagging and consolidation. Flow rate of the resin in the mesh roll direction is about 20% faster compared to the resin fl-ow at 90° to the mesh roll direction. Therefore take note of the mesh direction when using.

This product is used in various manufacturing processes of parts made of composite materials.



TECHNICAL DATA	VALUE
Material type	HDPE
Color	Yellow
Weight:	165g/m ²
Recommended use temperature:	115°C
Maximum use temperature	125°C

THICKNESS	WIDTH	LENGTH
1,7mm	1250mm	100m
1,7mm	2500mm	100m

STORAGE

Shelf life: not limited
Storage conditions: it is recommended to store at temperature from -20°C till + 30°C in the original packing.

NOTES

MOQ is 1 roll.
Maximum use temperature should be determined in actual process conditions.
The maximum use temperature depends on the duration at maximum temperature and is process specific, we recommend testing prior to use.